

# Zebra's IoT Connector (IoTC) For Scanners

**Ken Bhella**

*Director Software Product Management*



# Zebra's IoT Connector (IoTC) Overview

## Course Description

Want to collect scanner data on an enterprise level for analysis with 3rd party tools like Splunk or Power BI

Let us introduce you to the IoT Connector - Cloud based data collection made easy

- Asset Information
  - Statistics
  - Parameter Information
  - Real Time Alerts (RTAs)
  - Scan Data
- 
- Supported OSs: Windows and Linux



# Modular Solution Architecture (MSA)

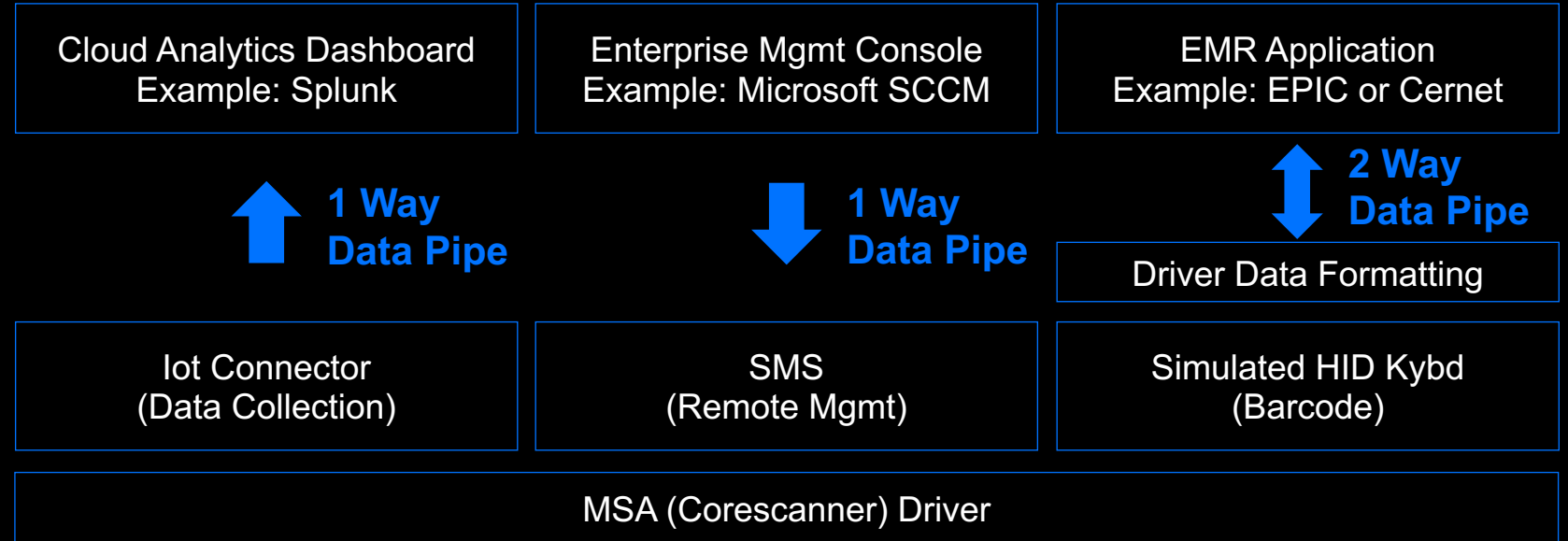
## A Flexible Software Ecosystem for Scanner

Zebra's “**Modular Solution Architecture**” provides you off-the-shelf software solutions to address your most burning problems, no coding required.

### A Suite of Enterprise Ready Modules

- Barcode Data Transmission – Scan and Transmit
- Remote Management – Configuration & Firmware
- Event Logging – Predictive Analytics, Troubleshooting, Asset Tracking

Drop-in ready, just configure an XML file, *no development required*



# Our Design Philosophy

## Simpler is Better

### We make our software simple and easy to use

- Technical Documentation (Setup, APIs, Sample App ...) on [TechDocs](#)
- Sample Source Code on [GitHub](#)
- Sample Apps demonstrate API usage (Great for debugging your app)
- Wizards guide you through processes
- Quarterly Email Blast – [Evolution Update](#) - What's New
- How-to-videos on [YouTube](#)



# IoT Connector Module

Part of our Scanner's "Eco-System" of Zebra Solutions

- Asset Information
- Real-Time Alerts
- Device Health / Statistics
- Barcode Data
- Scan Location\* / Time / Date

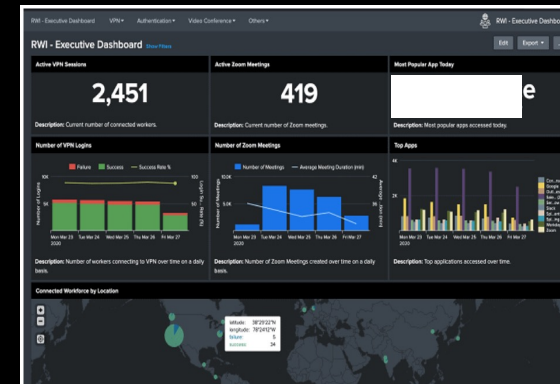
Enterprise data collection – Real-time, Automated  
Enables: Sense, Analyze, Act  
Leverages new data collection pipe, outside your host app  
Output options: Cloud endpoint like Data Lake, Local PC log file,  
Windows Event Logger, Network shared folder



Module Running on Host



Real Time  
JSON Format  
Call



**Cloud Analytics Dashboard**  
Trend Analysis  
Send Alert – Email  
Send Alert – Cellular Text  
Create Tracking Ticket

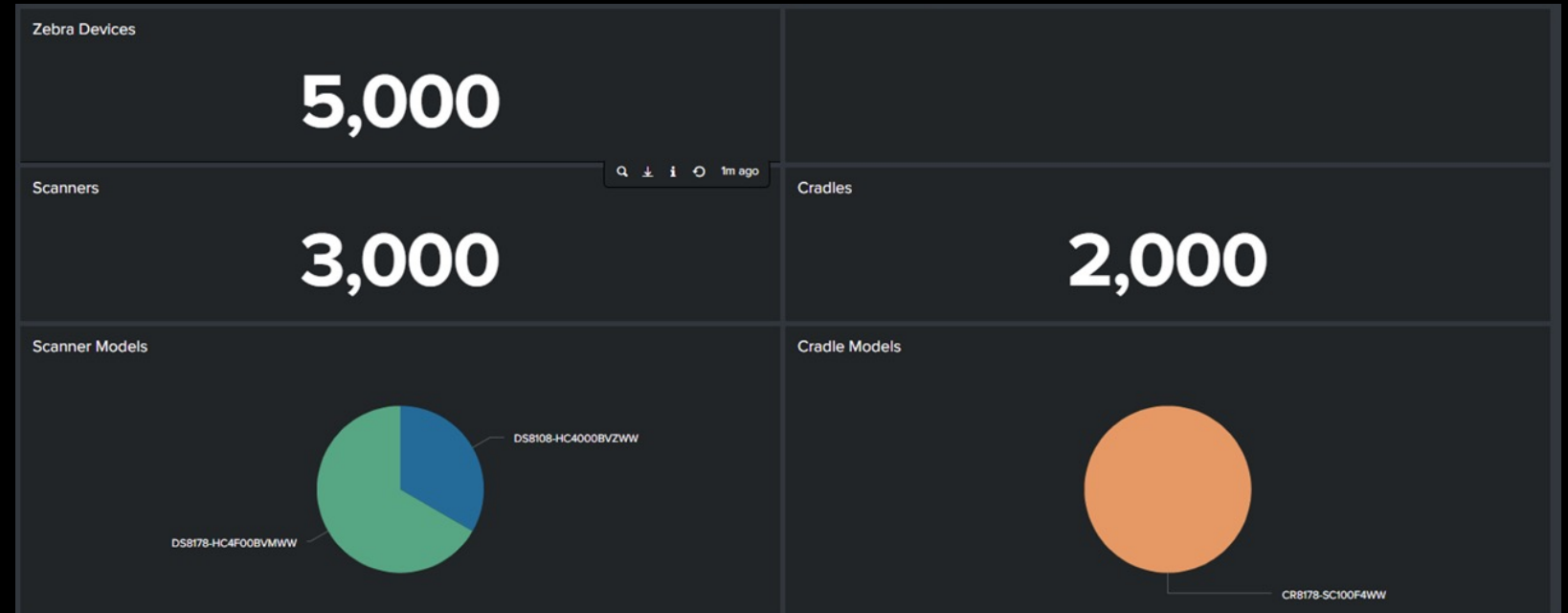
Industry Std: **Splunk Cloud Console**

# Enterprise Hardware View

## Actual Splunk Output

### Takeaways

- Total Zebra Hardware in Enterprise
- Breakdown - Scanners vs Cradle
- Breakdown - Coded vs Cordless Scanners

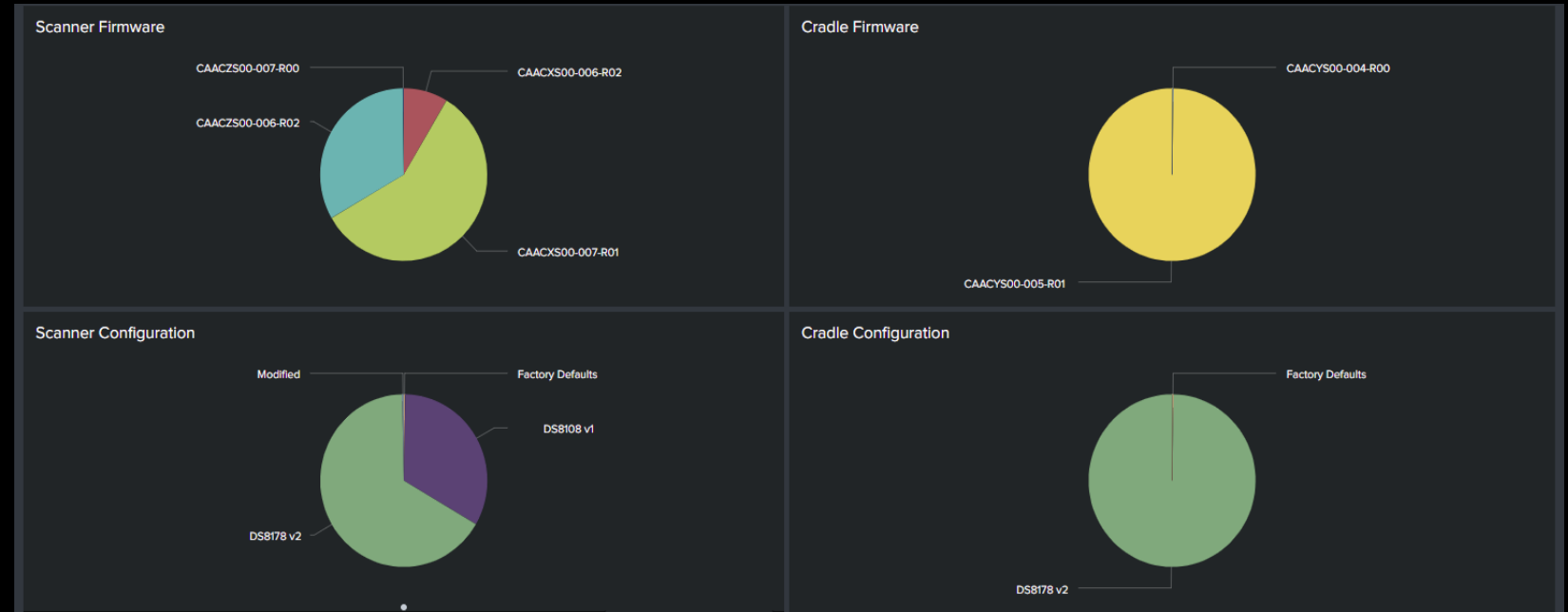


# Enterprise Asset Report

## Actual Splunk Output

### Takeaways

- Firmware versions (Enterprise Wide)
- Configuration File Name (Enterprise Wide)



# Real Time Alerts

## Actual Splunk Output



### Takeaways

- Real Time Alerts – Low Charge
- Real Time Alerts – Battery Must be Replaced
- Real Time Alerts – Configuration Modified

Zebra Alerts					Edit	Export ▾	...
Time	Division	Facility				Hide Filters	
All time ▾	All ▾	All ▾					
Battery Charge Alerts							
Division ▾	Facility ▾	Model ▾	Serial Number ▾	Charge % ▾			
Gulf Coast		DS8178-HC4F00BVMWW	ZED51587615	10			
Battery Charge Cycle Alerts							
Division ▾	Facility ▾	Model ▾	Serial Number ▾	Charge Cycles ▾			
Gulf Coast		DS8178-HC4F00BVMWW	ZED51587615	475			
Default Configuration Alerts							
Division ▾	Facility ▾	Model ▾	Serial Number ▾	Configuration ▾			
Capital		DS8108-HC4000BVZWW	ZED31663120	Factory Defaults			
Capital		DS8108-HC4000BVZWW	ZED39412271	Factory Defaults			
North Florida		CR8178-SC100F4WW	ZEC22446959	Factory Defaults			
North Florida		CR8178-SC100F4WW	ZEC24226046	Factory Defaults			
North Florida		CR8178-SC100F4WW	ZEC26134975	Factory Defaults			
North Florida		CR8178-SC100F4WW	ZEC26924904	Factory Defaults			

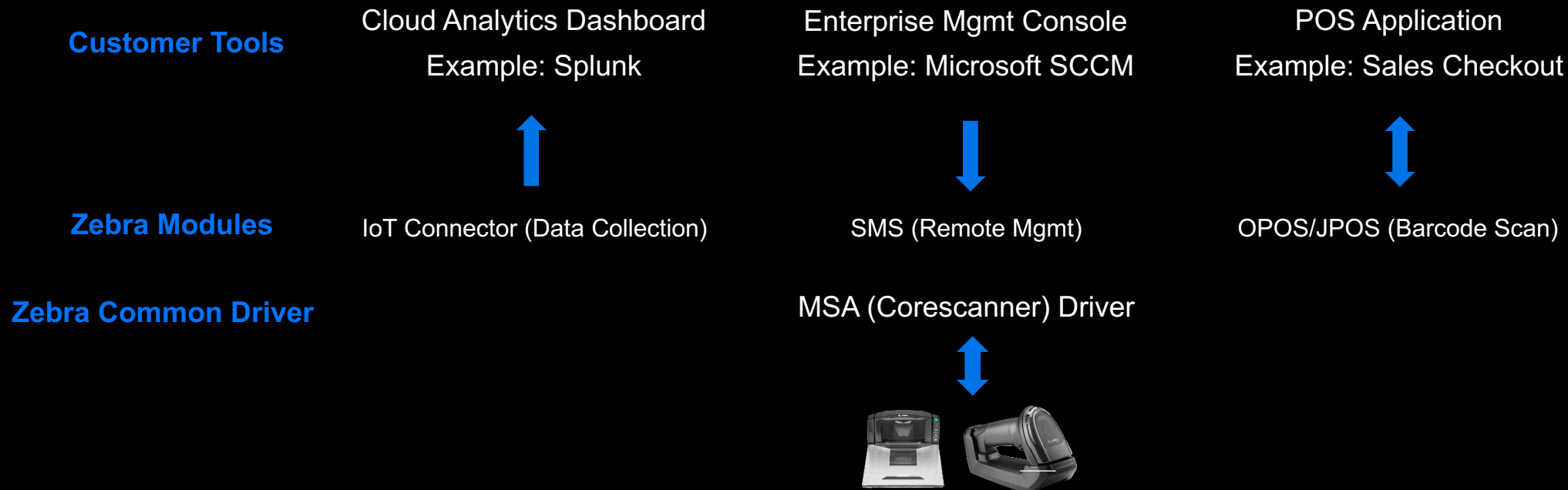


# Retail – MSA Implementation

## Drop-In Modules Work in Unison

### Multiple Industry 1st

- Two Way, Always Available Communication – Even if your host app is legacy HID Keyboard based
- Never Take the Scanner Offline – Multiple customer tools can access the scanner simultaneously
- Mix and Match Modules – Multiple modules can be used together without conflict
- Data Collection Made Easy – New data pipe enables data collection without touching the host app



# Live Demo

## Windows Implementation Being Shown



### What's being demo'd

1. How to setup the Window's system
2. Configuration options
3. Retrieve information from scanner and show what is output

# On-line Resources



## 1. Marketing Material

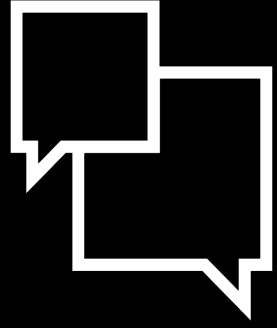
[www.zebra.com/scannersoftware](http://www.zebra.com/scannersoftware)

## 2. Software Downloads

<https://www.zebra.com/us/en/support-downloads/software/software-for-scanner.html>

## 3. How-to-Videos

<https://www.youtube.com/playlist?list=PLrcZVTwQp0lesloWgP3gReI ZZqst5Hb-z>



# Questions

# Zebra DevCon 2023



# Thank You

ZEBRA and the stylized Zebra head are trademarks of Zebra Technologies Corp., registered in many jurisdictions worldwide. All other trademarks are the property of their respective owners.  
©2023 Zebra Technologies Corp. and/or its affiliates. All rights reserved.

