

# Virtual Device-S



**ZEBRA**

## User Guide

© 2018 ZIH Corp. All rights reserved. ZEBRA and the stylized Zebra head are trademarks of ZIH Corp., registered in many jurisdictions worldwide. All other trademarks are the property of their respective owners.

Information in this document is subject to change without notice.

For further information regarding legal and proprietary statements, please go to:

COPYRIGHTS: <http://www.zebra.com/copyright>

WARRANTY: <http://www.zebra.com/warranty>

END USER LICENSE AGREEMENT: <http://www.zebra.com/eula>

SOFTWARE: <http://www.zebra.com/linkoslegal>

## **Terms of Use**

**Proprietary Statement** This manual contains proprietary information of Zebra Technologies Corporation and its subsidiaries (“Zebra Technologies”). It is intended solely for the information and use of parties operating and maintaining the equipment described herein. Such proprietary information may not be used, reproduced, or disclosed to any other parties for any other purpose without the express, written permission of Zebra Technologies.

**Product Improvements** Continuous improvement of products is a policy of Zebra Technologies. All specifications and designs are subject to change without notice.

**Liability Disclaimer** Zebra Technologies takes steps to ensure that its published Engineering specifications and manuals are correct; however, errors do occur. Zebra Technologies reserves the right to correct any such errors and disclaims liability resulting therefrom.

**Limitation of Liability** In no event shall Zebra Technologies or anyone else involved in the creation, production, or delivery of the accompanying product (including hardware and software) be liable for any damages whatsoever (including, without limitation, consequential damages including loss of business profits, business interruption, or loss of business information) arising out of the use of, the results of use of, or inability to use such product, even if Zebra Technologies has been advised of the possibility of such damages. Some jurisdictions do not allow the exclusion or limitation of incidental or consequential damages, so the above limitation or exclusion may not apply to you.

# Contents

- Introduction ..... 4**
  - Overview ..... 5
  - Virtual Device-S Features ..... 5
  - Supported Printers ..... 6
  - Configuring Network Connectivity ..... 6
  - Notes ..... 7
- Install, Register, and Enable Virtual Device-S ..... 8**
  - Acquiring the Virtual Device Application ..... 9
  - Downloading the Virtual Device-S Application ..... 10
  - Enabling the Virtual Device ..... 22
- Commands ..... 33**
  - Table of Supported Commands ..... 34
  - Set/Get/Do (SGD) Commands ..... 39
- Supported Fonts ..... 41**
- ZDownloader Utility ..... 45**
  - Downloading the ZDownloader Utility ..... 46
  - Installing the ZDownloader Utility ..... 47
- Index ..... 50**

# Introduction

This section describes the features and functions of a Zebra printer that is running the Virtual Device-S application.

## Contents

Virtual Device-S Features	5
Configuring Network Connectivity	6
Notes	7

## Overview

The Virtual Device-S application enables Zebra Link-OS printers to work with many host systems that are using SATO America, Inc. printers. In most cases, no changes will be required to the host application. This feature can help customers to make a smooth transition to Zebra printers and save them the time and expense of having to rewrite their host software.

## Virtual Device-S Features

The Virtual Device-S application:

- Uses existing features of Zebra printers, when available.
- Offers fonts similar to the original device. These fonts will use 120 KB or more of memory space.
- Supports the Bluetooth<sup>®</sup>, Serial, Ethernet, WLAN, and USB interfaces.
- Offers many outline fonts, barcodes, and specific commands and features of target printer models (see *Supported Fonts on page 41*).
- Provides support of SATO America, Inc. commands (see *Commands on page 33*).

## Supported Printers

This manual describes the Virtual Device-S language for Zebra Link-OS printers and should be used by any person who needs to support that language on one of the following Zebra printers:

Printer	Firmware
iMZ Series	V73.19.6Z and later
QLn Series	V68.19.6Z and later
ZD400 Series	V77.19.14Z or V84.20.05Z and later
ZD500 Series	V74.19.6Z and later
ZD600 Series	V84.20.05Z and later
ZQ300 Series	V81.20.06Z and later
ZQ500 Series	V76.19.10Z and later
ZQ600 Series	V85.20.11 and later
ZT200 Series	V72.19.6Z and later
ZT400 Series	V75.19.7Z and later
ZT510	V80.20.02Z and later
ZT600 Series	V80.20.02Z and later



**Note** • The Virtual Device-S language is supported only on 203 dpi printers.

For complete printer operation, use this manual in combination with the User Guide for your printer.

## Configuring Network Connectivity

Your printer may be equipped with one or more of the following interfaces:

- Bluetooth—For detailed information to connect a Bluetooth device, refer to the *Bluetooth User Guide*.
- Wired print server—For detailed information, refer to the *ZebraNet Wired and Wireless Print Servers User Guide*.
- Wireless print server—For detailed information, refer to the *ZebraNet Wired and Wireless Print Servers User Guide*.

For other connectivity options, refer to the User Guide for your printer. Copies of these manuals are available at <http://www.zebra.com/manuals>.

## Notes

- Other command languages are disabled when running Virtual Device-S. However, Set/Get/Do (SGD) commands and file download all operate properly with Virtual Device-S enabled.
- Virtual Device-S fonts can only be used with Virtual Device-S commands. They cannot be used with other languages.
- The Virtual Device-S mode application will not respond to CPCL, ZPL, or EPL commands. Instead, commands will be processed by the Virtual Device-S application.

# Install, Register, and Enable Virtual Device-S

This section provides you with instructions on how to install and enable the Virtual Device-S application on one or more Zebra printers.

## Contents

Acquiring the Virtual Device Application	9
Downloading the Virtual Device-S Application	10
Adding Printers to the ZDownloader List	10
Auto-Detect Printers	11
Modifying Printers in the List	16
Deleting Printers from the List	17
Downloading the Virtual Device App to Selected Printers	18
Registering the Virtual Device	21
Enabling the Virtual Device	22
Using an SGD Command	22
Using the User Menus	22
QLn420 Printers	23
QLn320 and QLn220 Printers	26
Supported ZDxxx, ZQxxx, and ZTxxx and Printers with a Display	29



## Acquiring the Virtual Device Application

To get the Virtual Device app, perform the following from your computer:

1. Open a web browser and navigate to <http://www.zebra.com/virtualdevices>.
2. Locate your printer type in the list of printers, and then click **Download Now**.
3. Fill out the information on the Virtual Device Download Request form.
4. Click **Submit**.
5. Read the End User License Agreement.
6. Click **Accept and Begin Download Now**.  
Your browser prompts you to open or save the archive containing the Virtual Device app.
7. Save and store the Virtual Device app archive file to your computer.  
The archive file contains the following:
  - The Virtual Device `.NRD` file to be downloaded to a Zebra printer.
  - A `.txt` file that contains the SGD command for immediately activating the Virtual Device app.
8. Extract the files from the archive to your computer.

## Downloading the Virtual Device-S Application

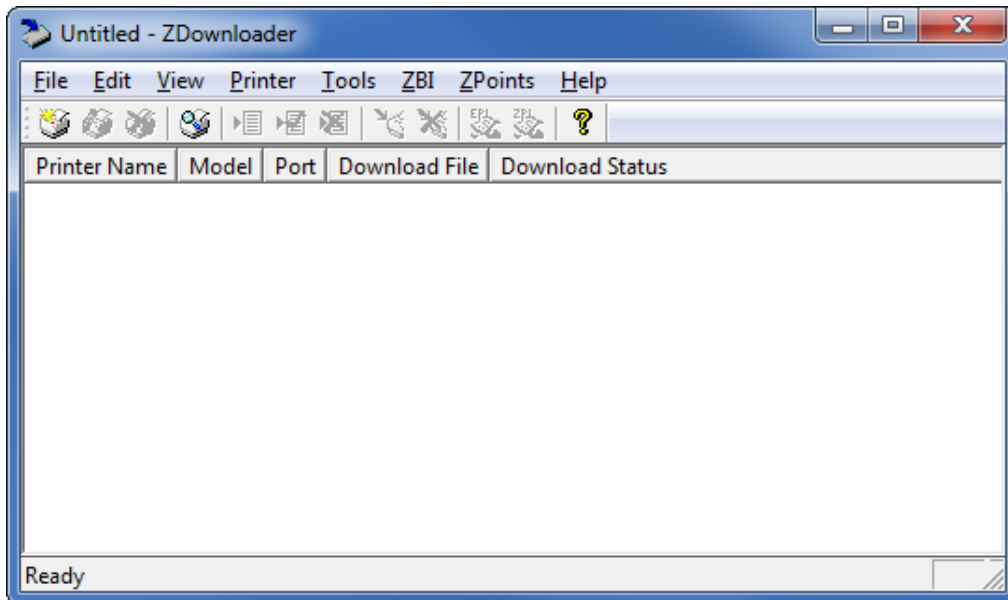
Zebra provides two options to download the Virtual Device-S app to the printer.

- On a computer with the ZDownloader Utility  
The ZDownloader Utility is the only method shown in this manual. For instructions on how to download and install the ZDownloader Utility, see *ZDownloader Utility on page 45*.
- On an Android device with the Zebra Printer Setup Utility for Android Devices (available for free on Google Play™)  
For information on using the Zebra Printer Setup Utility for Android Devices and to download the user guide, navigate to <http://www.zebra.com/setup>.

### Using ZDownloader

The ZDownloader application can update Virtual Device-S files in Zebra printers connected by Serial, Parallel, USB, and IP Ethernet networks.

Figure 1 • Initial ZDownloader Screen



### Adding Printers to the ZDownloader List

There are two ways to add printers to the list:

- Auto-Detect (use for USB or IP Ethernet interfaces)
- Manual add (use for Serial, Parallel, or IP Ethernet interfaces)

If your printer is connecting via the serial or parallel interfaces, or is not detected by using the Auto-Detect method, use the Manual Add method.

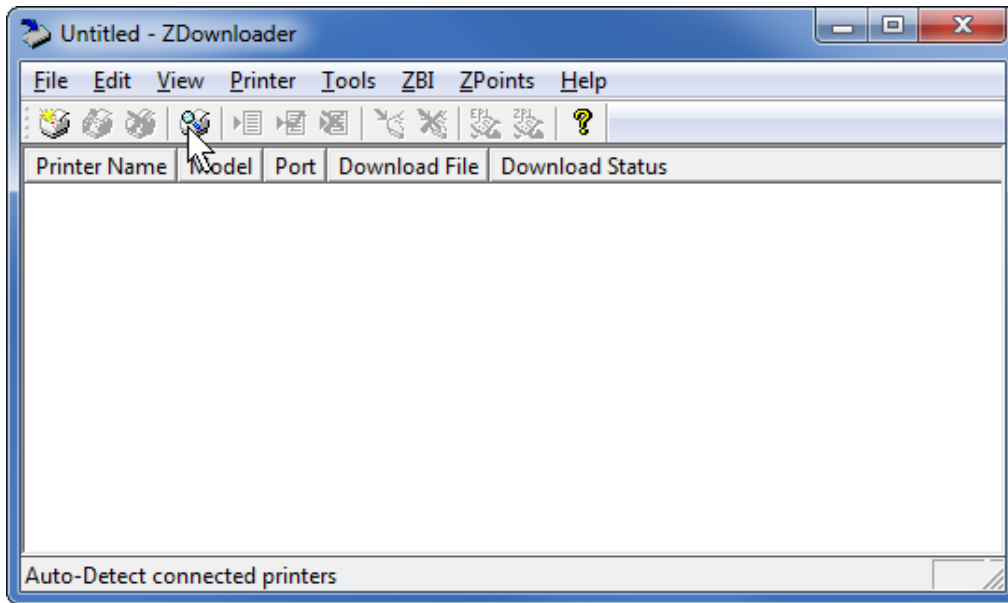
## Auto-Detect Printers

Use Auto-Detect for USB or IP Ethernet interfaces.



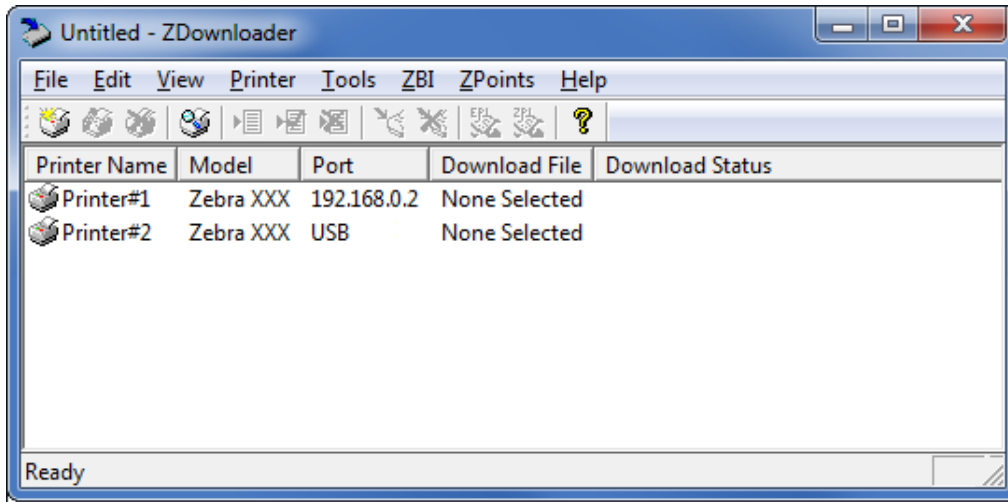
**Note** • Ethernet connected printers are detected by the application broadcasting a UDP packet out onto the network. UDP port number 4201 is used for the discovery process. Some networks filter out UDP packets. This means that the ZDownloader utility may not be able to detect all of the printers on your network. See your network administrator for more information. If you are not able to Auto-Detect your network printers, follow instructions for manually adding a printer.

USB printers can only be added by using Auto-Detect. The ZDownloader utility can support as many USB printers as your computer can support (most computers typically can support up to 255).



## To Auto-Detect printers connected via the USB or IP Ethernet interfaces, perform the following steps:

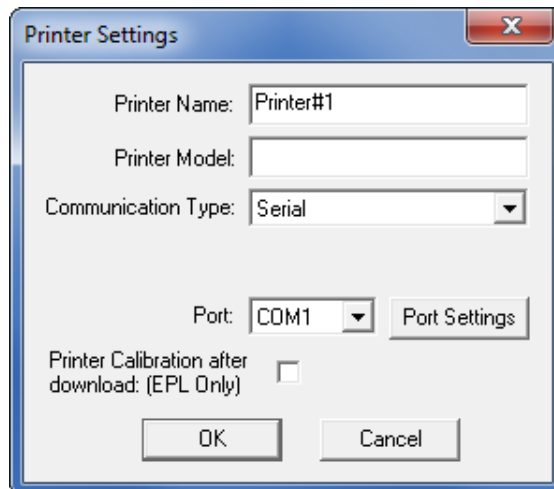
1. In the ZDownloader toolbar, select **Printer > Auto-Detect**.  
OR  
Right-click in the ZDownloader window and select **Auto-Detect Printers**.  
The printers detected are added to the printer list.



## Manually Add Printers

To manually add printers connected via the Serial, Parallel, or Network interfaces, perform the following steps:

1. In the ZDownloader toolbar, select **Printer > Add....**  
OR  
Right-click in the ZDownloader window and select **Add Printer....**  
The following window appears.

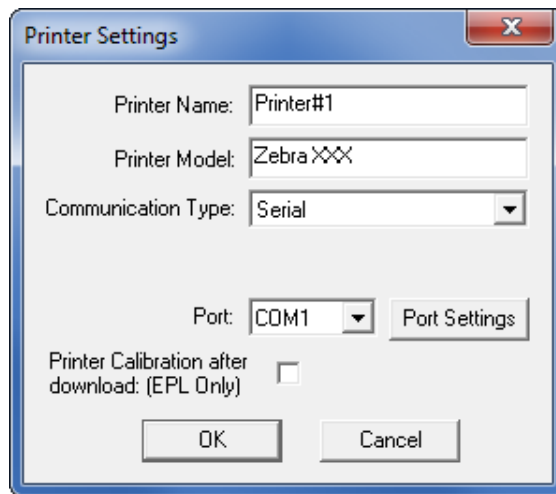


2. Add a printer name and your printer model in the appropriate fields.
3. What type of printer are you adding?

If you are adding a...	Then...
Serial Printer	<a href="#">Go to Adding a Serial Printer.</a>
Parallel Printer	<a href="#">Go to Adding a Parallel Printer on page 15.</a>
Network Printer	<a href="#">Go to Adding a Network Printer on page 15.</a>

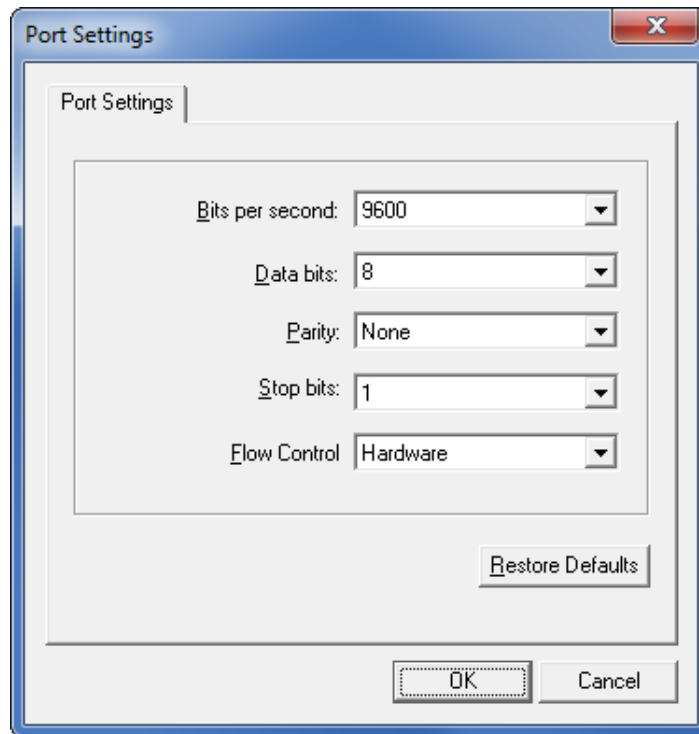
## Adding a Serial Printer

1. Select the serial port to which the printer is connected.



**2. Click Port Settings.**

The following window appears.

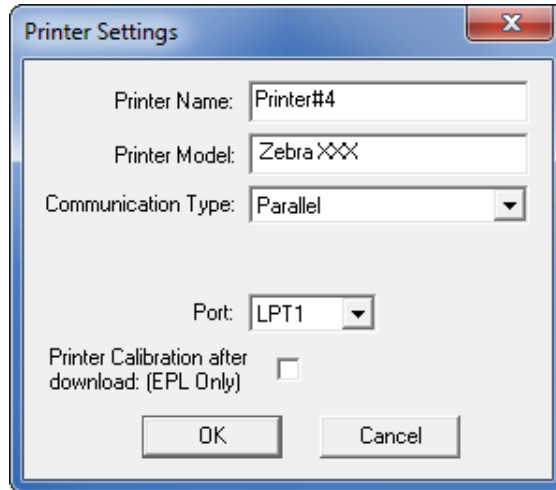


3. Adjust the settings as necessary. The printer's serial port settings must match the computer's serial port settings. For more information about the settings, refer to the User Guide for your printer.
4. Click **OK** to save the port settings.
5. Click **OK** to add the printer.

## Adding a Parallel Printer

1. Set **Communication Type** to **Parallel**.

The available parallel ports will be shown in the Port drop-down box.

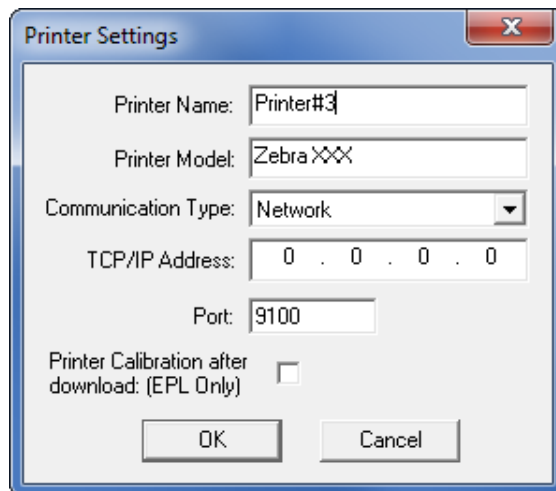


2. Select the port to which the printer is connected. No additional configuration is necessary.
3. Click **OK** to add the printer.

## Adding a Network Printer

1. Set **Communication Type** to **Network**.

The following window appears.

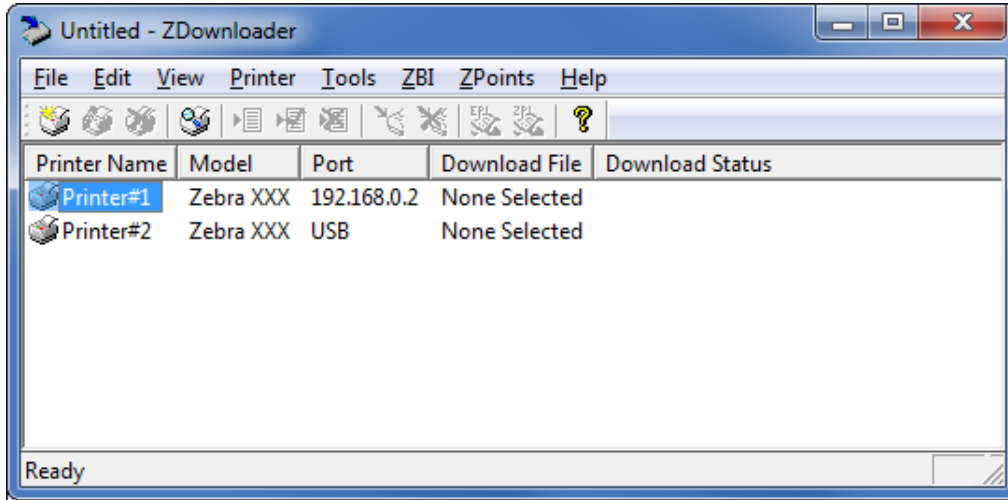


2. Enter the printer's IP address.
3. Click **OK** to save the network settings.
4. Click **OK** to add the printer.

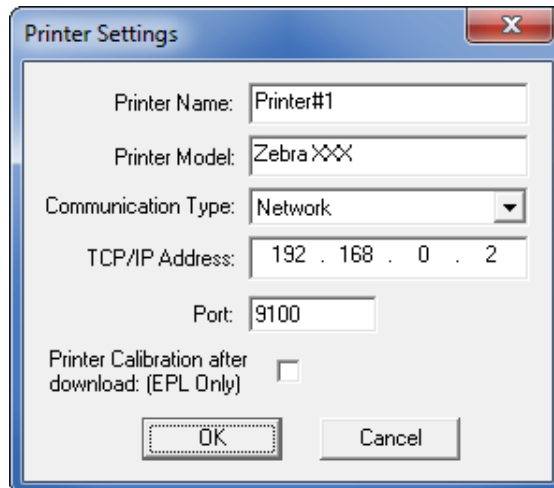
## Modifying Printers in the List

To change printer settings for a printer in the list, perform the following steps:

1. Select the printer to modify.



2. In the toolbar, select **Printer > Modify Printer....**  
OR  
Right-click on the printer and select **Modify Printer....**  
The printer settings for the selected printer are displayed.



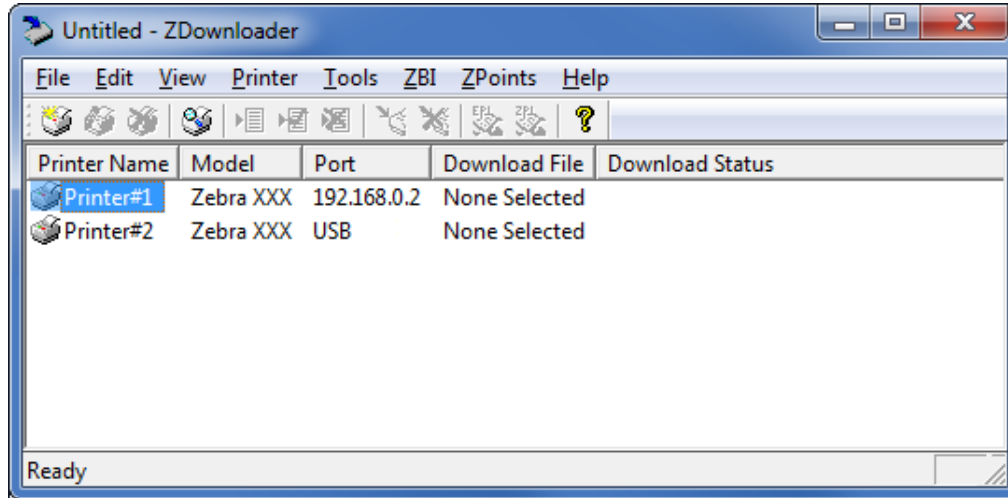
3. Modify the settings as desired.
4. Click **OK** to save the settings.



## Deleting Printers from the List

To delete printers from the list, perform the following steps:

1. Select one or more printers to delete.

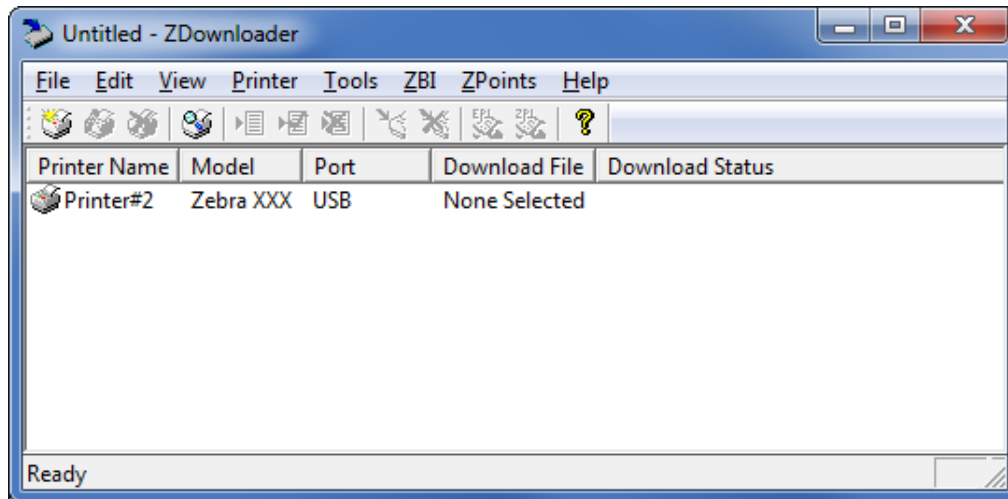


2. In the toolbar, select **Printer > Delete**.

OR

Right-click on one of the selected printers and select **Delete Printer(s)**.

The printer is removed from the list.



## Downloading the Virtual Device App to Selected Printers

To download the Virtual Device-S app to your printer(s), you must select the file to send to each printer. ZDownloader, by default, downloads files to one printer at a time. If you have multiple printers to update and want to speed up the process, you can increase the number of simultaneous downloads.

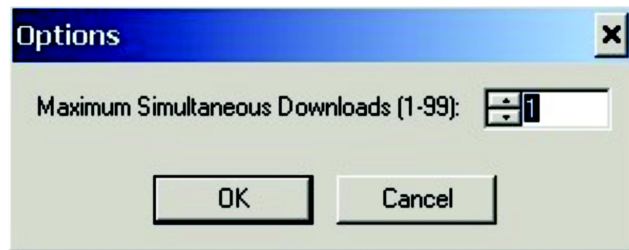


**Note** • More simultaneous downloads require more of your computer resources. Some computers may slow down with simultaneous downloads or as more printers are added for simultaneous downloading.

**To allow simultaneous downloads, perform the following step:**

1. Click **Tools > Options...**

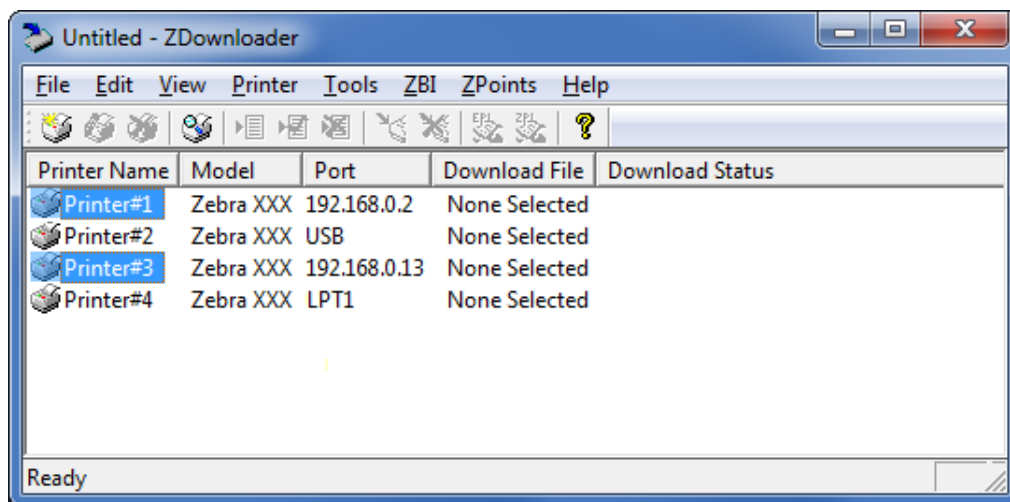
The following prompt appears.



2. Raise the number shown to allow multiple simultaneous downloads.
3. Click **OK**.

**To download the Virtual Device app file to one or more printers, perform the following steps:**

1. Select the printers to which you want to download the Virtual Device-S app file. To select multiple printers, hold down the Ctrl or Shift key, and then click on the desired printers.



2. In the toolbar, select **File > Select Firmware File....**

OR

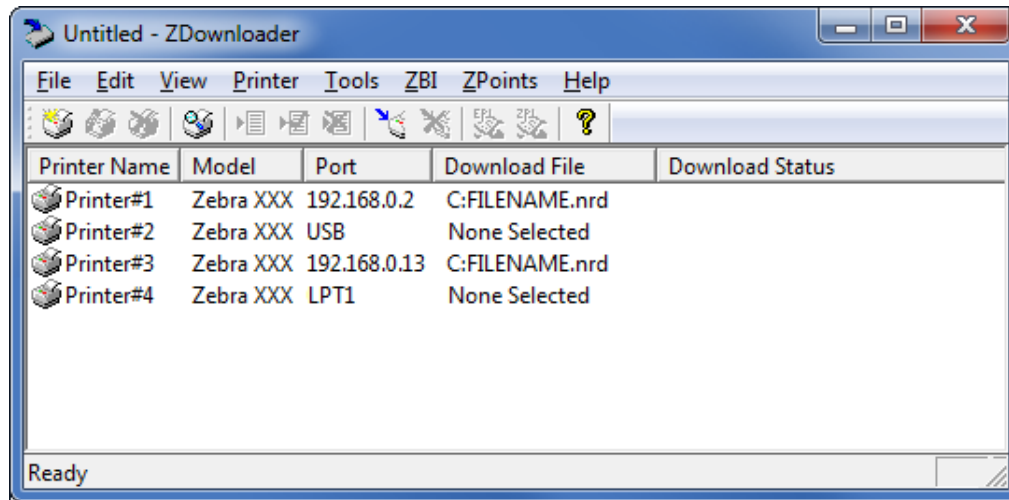
Right-click on one of the selected printers and select **Select Firmware File....**

3. Navigate to the Virtual Device app file that you acquired previously.

4. Click Open.

The file that you selected appears under Download File for the selected printers.

Printers that are present in the list but that do not have a file selected will be ignored when Downloading starts.



5. Start the download process by doing one of the following:

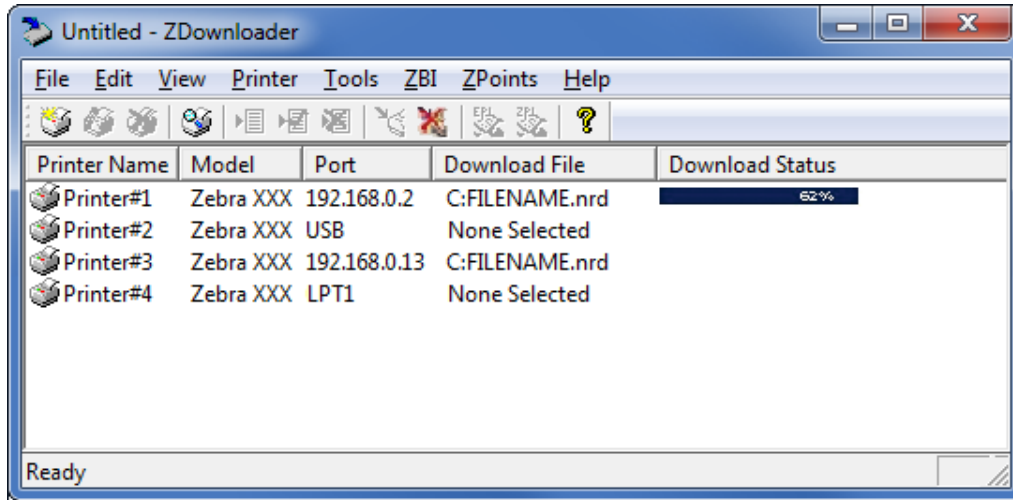
- Select **Printer > Download to Selected.**
- Select the printer(s) of interest and select the **Printer** and then select **Download To Selected.**

6. In the toolbar, select **Printer > Download All**.

OR

Right-click in the ZDownloader window and select **Download All**.

After downloading has begun, the progress of each printer will be shown in the Download Status column.



## Canceling a Download in Progress

The Cancel Download toolbar button and the Printer > Cancel Download menu options become active when the files are downloading.

**To cancel downloading to ALL printers in the list, perform the following step:**

1. Click **Printer > Cancel Download**.

OR

Right-click in the ZDownloader window and select **Cancel Download**.

**To cancel downloading to SPECIFIC printers in the list, perform the following step:**

1. Select one or more printers with a download in progress.

2. Click **Printer > Cancel Download**.

OR

Right-click on a selected printer and select **Cancel Download**.

## Registering the Virtual Device

ZDownloader maintains a log file of all items downloaded to a Zebra printer along with the printer serial number. You can register your Virtual Device installation with Zebra Repair and Tech Support to ensure that a printer sent in for repair is returned with the Virtual Device installed, and when engaging Zebra Tech Support, they will have records of the item being loaded. To register your Virtual Device installation, you must send the log file created by ZDownloader to the Zebra log file management group.

### ZDownloader Log File

#### To send the log file, complete these steps:

1. Based on your operating system, navigate to the appropriate folder:

- Microsoft® Windows® XP  
`C:\Program Files\Common Files\FirmwareDownloader`
- Microsoft Windows 7, Windows 8, and Windows 10  
`C:\ProgramData\Zebra Technologies\Firmware Downloader and ZBI Key Manager`

2. Copy the log file (`DownloadLog.txt`), and email to [Zdownloader@zebra.com](mailto:Zdownloader@zebra.com).

If you are downloading from several computers, you need to send the log file from each computer. If you download files to printers on one day and do not send the file the same day, please note this in your email so that the log file management group picks up the previous load detail. Otherwise, they only pick up the load data for the day that the log file is sent.

## Enabling the Virtual Device

You can enable Virtual Device-S by sending a Set/Get/Do (SGD) command to the printer or by selecting the option through the printer's menus.

### Using an SGD Command

To enable Virtual Device-S on your printer, send the following command:

```
! U1 setvar "apl.enable" "apl-s"
```

To disable Virtual Devices on your printer and return to normal function, send the following command:

```
! U1 setvar "apl.enable" "none"
```

You must restart the printer after changing the value of `apl.enable`. For more information about this SGD command, see [apl.enable on page 39](#).

### Using the User Menu

This section includes instructions for the following printers:

- [QLn420 Printers on page 23](#)
- [QLn320 and QLn220 Printers on page 26](#)
- [Supported ZDxxx, ZQxxx, and ZTxxx and Printers with a Display on page 29](#)

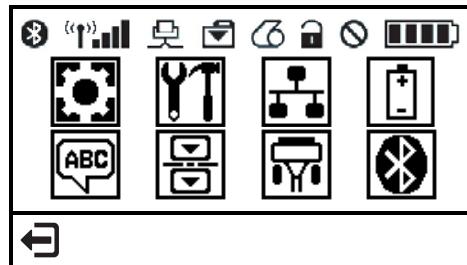
If necessary, refer to the User Guide for your printer for additional information about your printer's control panel.

## QLn420 Printers

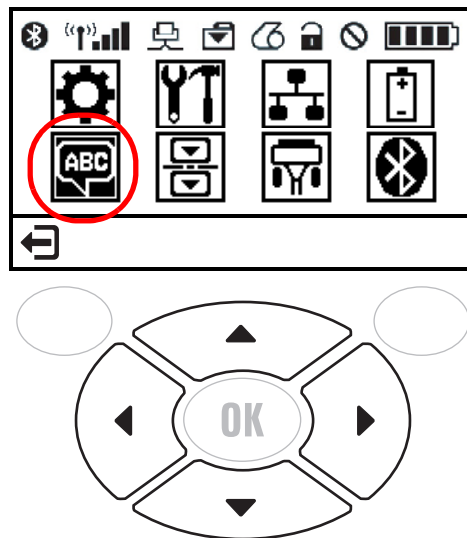
1. From the printer's idle display screen, press the **LEFT SOFT KEY** to select the Home icon.



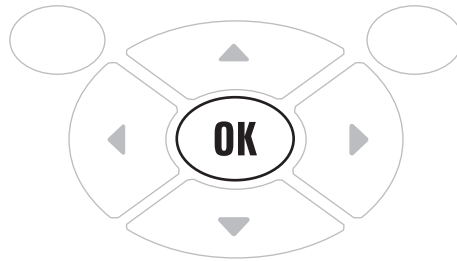
The printer displays the Home Menu.



2. Use the **ARROWS** to navigate to the **LANGUAGE** menu.



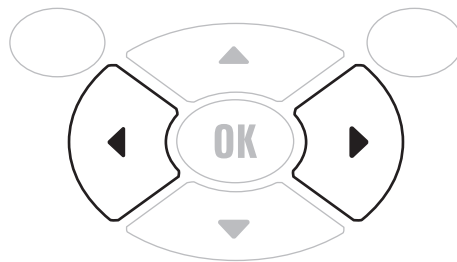
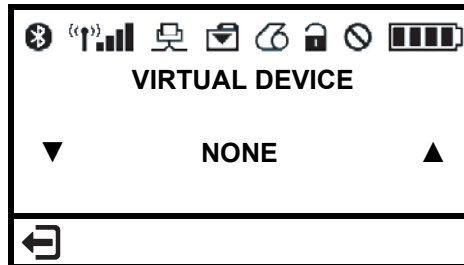
3. Press **OK**.



The printer displays the **LANGUAGE** selection screen.

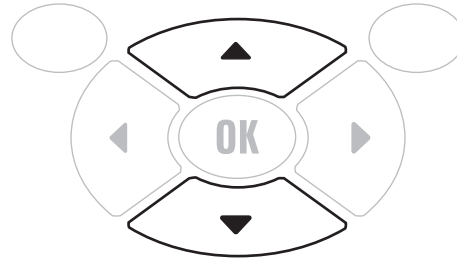
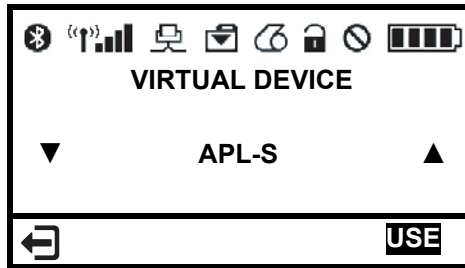


4. Use the **LEFT** or **RIGHT ARROW** to navigate to the **VIRTUAL DEVICE** selection screen.

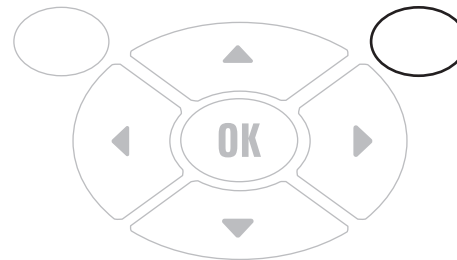




5. Use the **UP** or **DOWN ARROW** to scroll to the **APL-S** option.



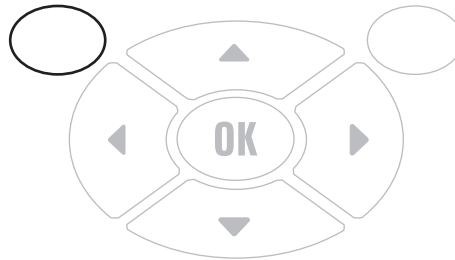
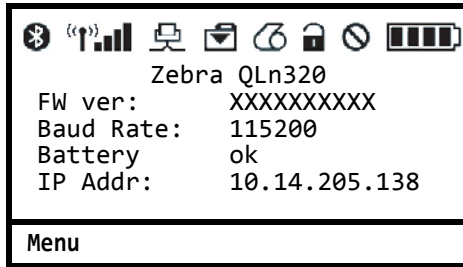
6. Press the **RIGHT SOFT KEY** to select **USE**.



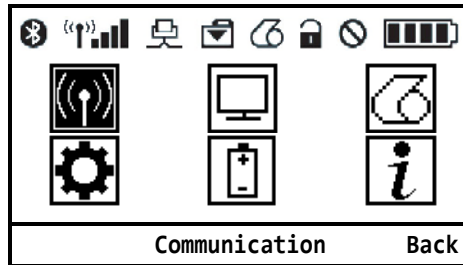
The printer restarts and uses the Virtual Device that you selected.

## QLn320 and QLn220 Printers

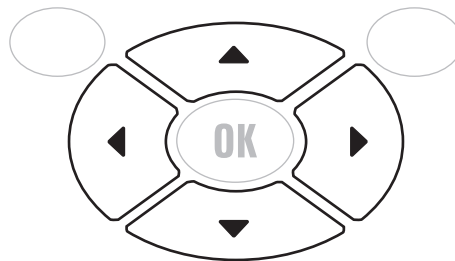
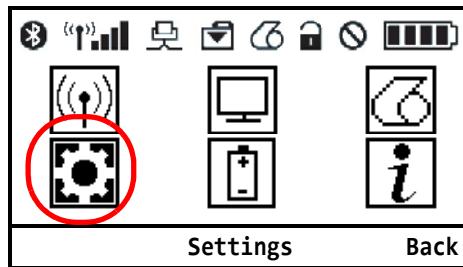
1. From the printer's idle display screen, press the **LEFT SOFT KEY** to select the Home icon.



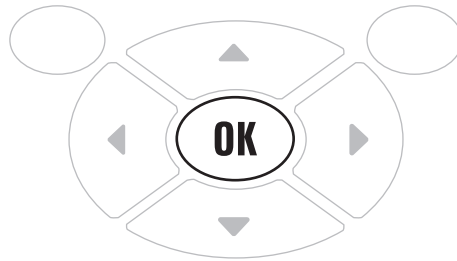
The printer displays the Home Menu.



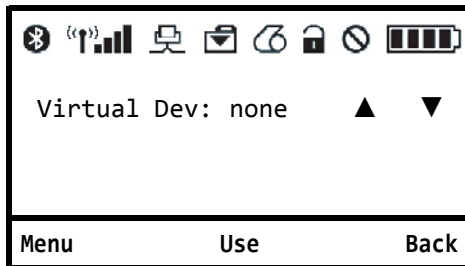
2. Use the **ARROWS** to navigate to the **SETTINGS** menu.



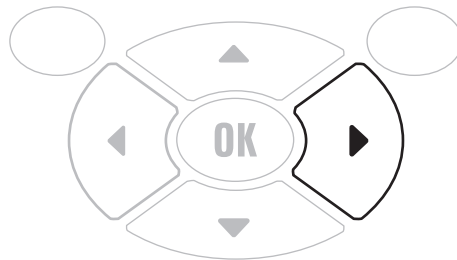
3. Press **OK**.



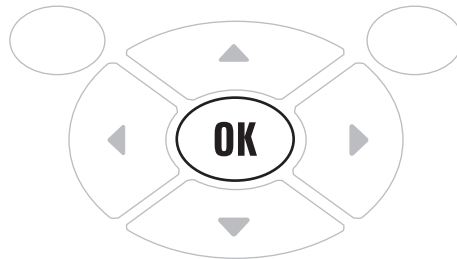
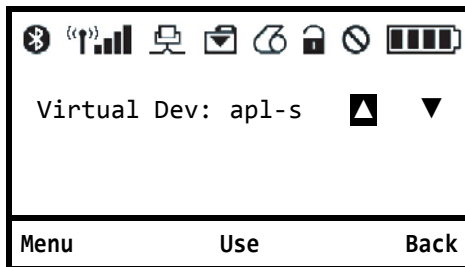
The printer displays the **VIRTUAL DEVICE** selection screen.



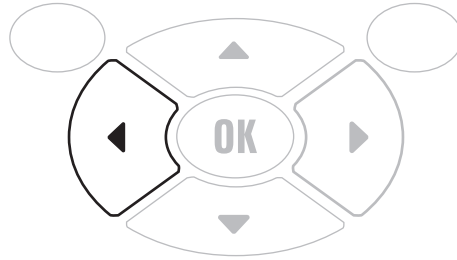
4. Press the **RIGHT ARROW** to highlight the up arrow on the display.



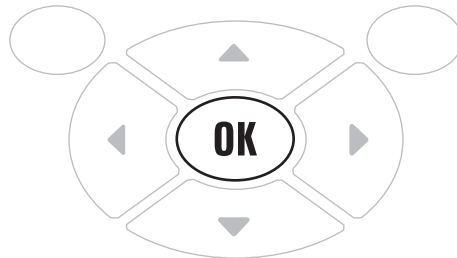
5. With the up arrow highlighted, press the **OK** button until you scroll to the **APL-S** option.



6. Press the **LEFT ARROW** to highlight **APL-S**



7. Press **OK** to select **USE**.



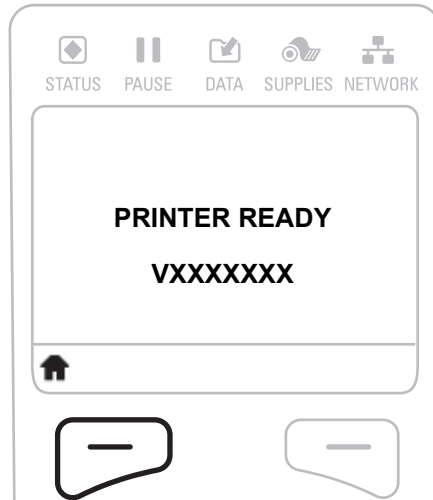
The printer restarts and uses the Virtual Device that you selected.

## Supported ZDxxx, ZQxxx, and ZTxxx and Printers with a Display

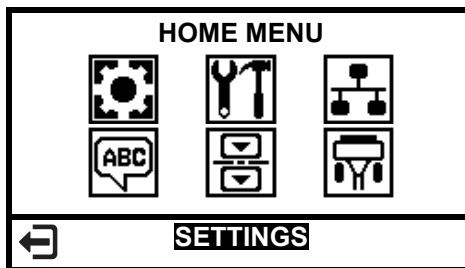


**Note** • The ZT230 control panel is shown in this procedure. The control panel for the other printers is similar.

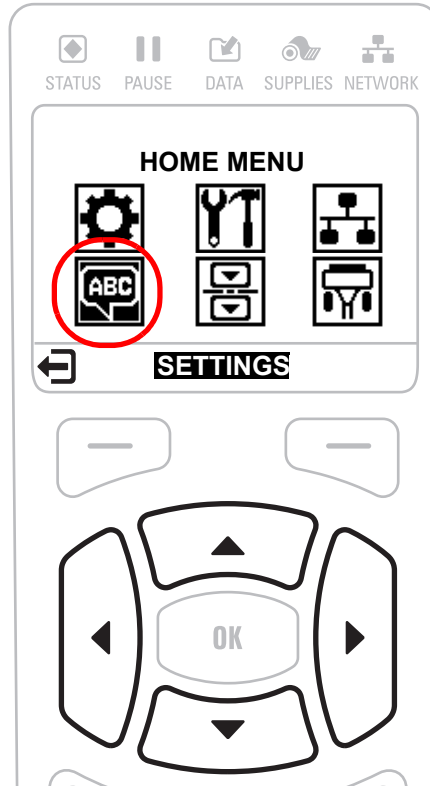
1. From the printer's idle display screen, press the **LEFT SELECT KEY** to select the Home icon.



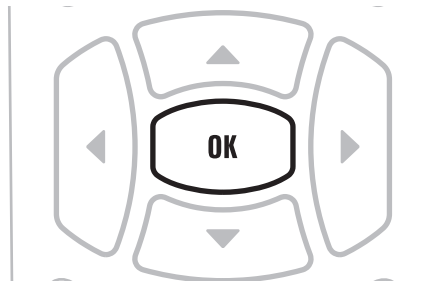
The printer displays the Home Menu.



2. Use the **ARROWS** to navigate to the **LANGUAGE** menu.



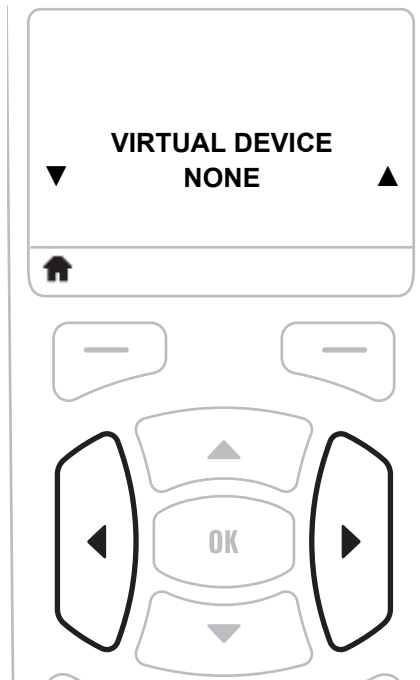
3. Press **OK**.



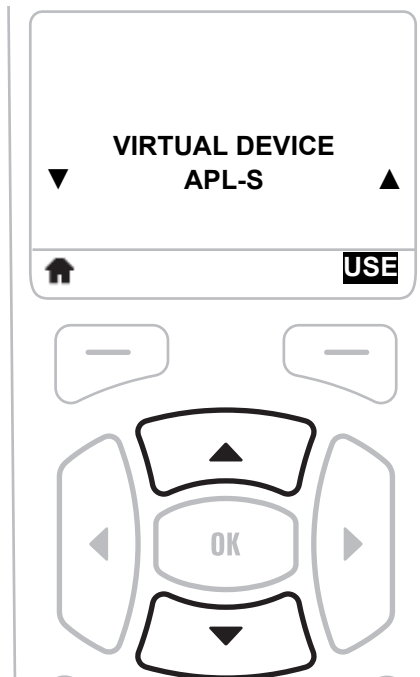
The printer displays the **LANGUAGE** selection screen.



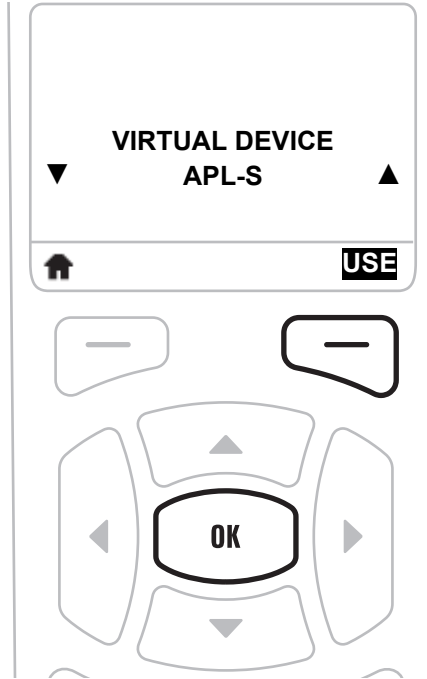
4. Use the **LEFT** or **RIGHT ARROW** to navigate to the **VIRTUAL DEVICE** selection screen.



5. Use the **UP** or **DOWN ARROW** to scroll to the **APL-S** option.



6. Press the **RIGHT SOFT KEY** or **OK** to select **USE**.



The printer restarts and uses the Virtual Device that you selected.



# Commands

This section provides a listing of commands for use on your Zebra printer with the Virtual Device-S app.

## Contents

Table of Supported Commands	34
Set/Get/Do (SGD) Commands	39

## Table of Supported Commands

For a complete list of commands (including those that are not supported and not listed here), refer to the documentation that came with your printer.

Syntax	Command Function	Supported (✓)	Notes
<ESC>A	Start Label	✓	—
<ESC>~A	Cut, Label	—	—
<ESC>~a	Cut, Job	—	—
<ESC>~(NULL)	Multiple Cuts	—	—
<ESC>~B	Cut, Last	—	—
<ESC>AO	Auto Online	—	—
<ESC>A1	Media Size	✓	—
<ESC>&	Form Overlay, Store	✓	—
<ESC>AR	Standard Print Area	✓	—
<ESC>&R	Form Overlay, Recall	✓	—
<ESC>&S	Form Overlay, Store	✓	—
<ESC>*	Clear (Memory Card)	✓	Options G, P, M only
<ESC>*	System Clear	—	—
<ESC>@	Offline/Pause	—	—
<ESC>A3	Start Point Correction	✓	—
<ESC>AX	Print Area Enlargement	✓	—
<ESC>B	Barcode, Ratio 1:3	✓	—
<ESC>B0	Codabar	—	—
<ESC>B1	Code 39	✓	—
<ESC>B2	Interleaved 2 of 5	✓	—
<ESC>B3	UPC-A / EAN-13	✓	—
<ESC>B4	EAN-8	✓	—
<ESC>B5	Industrial 2 of 5	✓	—
<ESC>B6	Matrix 2 of 5	—	—
<ESC>BA	MSI	—	—
<ESC>BC	Code 93	✓	—
<ESC>BE	UPC-E	✓	—
<ESC>BF	Bookland	—	—
<ESC>BG	Code 128	✓	—
<ESC>BH	SSCC/UCC128	—	—
<ESC>BD	Barcode, Ratio 2:5	✓	—

Syntax	Command Function	Supported (✓)	Notes
<ESC>BF	Bookland	—	—
<ESC>BG	CODE 128 Barcode	✓	—
<ESC>BI	UCC/EAN 128	✓	—
<ESC>BJ/BJD	True Type Font, Store	—	—
<ESC>BJF	Card, Format	—	—
<ESC>BJS	Print Memory Card Status	—	—
<ESC>BJT	True Type Font, Recall	—	—
<ESC>BK	PDF 417	✓	—
<ESC>BP	Postnet	—	—
<ESC>BQ	QR Code	✓	—
<ESC>BT	Variable Ratio Barcodes	✓	—
<ESC>BV	Maxi Code	✓	—
<ESC>BW	Barcode Expansion	✓	—
<ESC>BX	Data Matrix Code	✓	—
<ESC>C	Repeat Label	—	—
<ESC>CC	Card, Slot Specification	—	—
<ESC>CL	CL/LF Deletion	✓	—
<ESC>CS	Print Speed	✓	—
<ESC>D	Barcode, Ratio 1:02	✓	—
<ESC>d/D~	Barcode, Human Readable Information (HRI)	✓	Only <ESC>d <ESC>D~ not supported
<ESC>DC	Data Matrix Code, Data	✓	—
<ESC>\$	Font, Vector	✓	—
<ESC>\$=	Outline Font Print	✓	—
<ESC>E	Line Feed	✓	—
<ESC>EJ	Feed Specification	—	—
<ESC>EP	Print End Position	—	—
<ESC>EU	EAN/UCC Composite Symbol	✓	—
<ESC>EX	Memory Area Enlarge Specification	—	—
<ESC>EX0	Print Length Expansion	✓	—
<ESC>F	Sequential Numbering	✓	—
<ESC>FW	Printing, Lines & Boxes	✓	—
<ESC>FX	Data Matrix Code, Sequential Number	✓	—
<ESC>G	Graphics, Custom	✓	—

Syntax	Command Function	Supported (✓)	Notes
<ESC>GC	BMP File, Recall	✓	—
<ESC>GI	Graphic, Store	✓	—
<ESC>GM	Graphics, BMP File	✓	—
<ESC>GP	Graphics, PCX File	✓	—
<ESC>GR	Graphic, Recall	✓	—
<ESC>GT	BMP File, Store	✓	—
<ESC>H	Horizontal Print Position	✓	—
<ESC>I	Divided Motion Specification	—	—
<ESC>ID	Job Store ID	—	—
<ESC>IG	Sensor Type Selection	✓	—
<ESC>J	Journal Printing	—	—
<ESC>K	External Character Recall Text Flow	✓	—
<ESC>L	Character, Expansion	✓	—
<ESC>LA	Language	—	—
<ESC>LD	User Download	—	—
<ESC>LF	Online Feed	✓	—
<ESC>LH	Zero Slash	✓	—
<ESC>M	M Font	✓	—
<ESC>OA	OA Font	✓	8 dots/mm, 12 dots/mm
<ESC>OB	OB Font	✓	8 dots/mm
<ESC>OL	Online	—	—
<ESC>P	Character, Pitch	✓	—
<ESC>(	Reverse Image	✓	—
<ESC>PC	Printer Motion Register Specificaion	—	—
<ESC>PD	Small Label Size Specification	—	—
<ESC>%	Rotate, Fixed Base Reference Point	✓	—
<ESC>PG	EEPROM Setup	—	—
<ESC>PH	Print Method, Thermal/Thermal Transfer	✓	—
<ESC>PI	PCX File, Store	✓	—
<ESC>PM	Print Mode Selection	✓	—
<ESC>PO	Offset Specification	—	—
<ESC>#	Start Position Specification	—	—

Syntax	Command Function	Supported (✓)	Notes
<ESC>#E	Print Darkness	—	Adjust darkness from the printer control panel or use the <code>print.tone SGD</code> command.
<ESC>PR	Character, Fixed Spacing	✓	—
<ESC>PS	Character, Proportional Spacing	✓	—
<ESC>PY	PCX File, Recall	✓	—
<ESC>Q	Print Quantity	✓	—
<ESC>RC	Sheet Unit Cut Quantity	—	—
<ESC>RD	Font, Raster	✓	—
<ESC>RE	Telegraphic Message End Specification	—	—
<ESC>RF	Recall and Print of Font & Logo	—	—
<ESC>RI	Label Size	—	—
<ESC>RM	Mirror Image	—	—
<ESC>RP	Reprint Configuration	—	—
<ESC>RS	Sheet Sending Specification	—	—
<ESC>RT	Label Size	—	—
<ESC>RW	Sheet Unit Copy Quantity	—	—
<ESC>S	S Font	✓	—
<ESC>/	Form Overlay, Recall	✓	—
<ESC>/D	Field, Recall	—	—
<ESC>/N	Field, Store	—	—
<ESC>2D10	PDF417 of 2D Code	✓	—
<ESC>2D12	Micro PDF417 of 2D Code	✓	—
<ESC>2D20	Maxi Code of 2D Code	✓	—
<ESC>2D30	QR Code (Mode 2) of 2D Code	✓	—
<ESC>2D31	QR Code (mode 1) of 2D Code	✓	—
<ESC>2D32	Micro QR Code of 2D Code	—	—
<ESC>2D50	Data Matrix (ECC200) of 2D Code	—	—
<ESC>2D51	GS1 Barcode	✓	—
<ESC>T	Custom Designed Characters	✓	<ESC>T1 (16x16) only
<ESC>TP	Test Printing	—	—
<ESC>2S	Two-Color Print Range Specification	—	—
<ESC>U	U Font	✓	—

Syntax	Command Function	Supported (✓)	Notes
<ESC>_D	Variable Data Specification	—	—
<ESC>_F	Small Label Start	—	—
<ESC>_N	Format Specificaion	—	—
<ESC>_Q	Print Quantity	—	—
<ESC>V	Vertical Print Position	✓	—
<ESC>WA	Calendar Printing	—	—
<ESC>WB	WB Font	✓	—
<ESC>WD	Copy Image Area (Partial Copy)	—	—
<ESC>WK	Job Name	✓	—
<ESC>WL	WL Font	✓	—
<ESC>WP	Calendar Increment	—	—
<ESC>WS	Work-Shift Print Information Specification	—	—
<ESC>WT	Calendar Configuration	—	—
<ESC>XB	XB Font	✓	—
<ESC>XCL	XCL Font	—	—
<ESC>XCS	XCS Font	—	—
<ESC>XL	XL Font	✓	—
<ESC>XM	XM Font	✓	—
<ESC>XS	XS Font	✓	—
<ESC>X70	X70 Font	—	—
<ESC>X71	X71 Font	—	—
<ESC>X72	X72 Font	—	—
<ESC>X73	X73 Font	—	—
<ESC>X74	X74 Font	—	—
<ESC>X75	X75 Font	—	—
<ESC>X76	X76 Font	—	—
<ESC>X77	X77 Font	—	—
<ESC>XU	XU Font	✓	—
<ESC>YE	Label Specification	—	—
<ESC>YR	Format, Recall	—	—
<ESC>YS	Format, Store	—	—
<ESC>Z	Stop Label	✓	—
<ESC>θ	Replace Data (Partial Edit)	—	—

## Set/Get/Do (SGD) Commands

The following SGD commands were added for use with your Virtual Device app. For more detailed information on SGD commands, see the *Programming Guide for ZPL II<sup>®</sup>, ZBI 2, Set/Get/Do, Mirror, and WML* (formerly the *ZPL II Programming Guide*).

### apl.enable

**Description** This command enables or disables a Virtual Device app.



**Note** •

- ZPL and CPCL may not function normally when a Virtual Device app is enabled.
- You must restart the printer after changing the value of `apl.enable`.

**Type** `setvar`

Commands	Details
<code>setvar</code>	<p>This command instructs the printer to enable a virtual device.</p> <p><i>Format:</i> <code>! U1 setvar "apl.enable" "value"</code></p> <p><i>Values:</i></p> <ul style="list-style-type: none"> <li><code>"apl-s"</code> = enable Virtual Device-S</li> <li><code>"none"</code> = disable any Virtual Device app (ZPL and CPCL function normally)</li> </ul>



**Example 1** • This example shows how to enable the Virtual Device-S app:

```
! U1 setvar "apl.enable" "apl-s"
```



**Example 2** • This example shows how to disable the Virtual Device-S app:

```
! U1 setvar "apl.enable" "none"
```

### apl.version

**Description** This command returns the version of the currently running Virtual Device app.

**Type** `getvar`

Commands	Details
<code>getvar</code>	<i>Format:</i> <code>! U1 getvar "apl.version"</code>

## apl.framework\_version

**Description** This command returns the level of support for Virtual Devices in the printer operating system.

**Type** `getvar`

Commands	Details
<code>getvar</code>	<i>Format:</i> ! U1 <code>getvar "apl.framework_version"</code>



# Supported Fonts

This section provides you with examples of the fonts available on the Zebra printers with Virtual Device-S.

**Table 1 • Supported Fonts**

Font M	FONT OA
!"#\$%&'()*+,-	⋄
./0123456789:	./0123456789
;<=>?@ABCDEFGH	> ABCDEFG
HIJKLMNOPQRST	HIJKLMNOPQRST
UVWXYZ[\]^_`ab	UVWXYZ
cdefghijklmno	
pqrstuvwxyz	
{ }~	
ÇüéâãäåçêëèìíîËÄ	
ÉæÆôöòùÿÖÜø£Øxf	
áíóúñÑæœó@™¼½¾i«»	
ÁÂÀ@    ø¥	
ãÃ	
øÐÊËÈ€íîï    ì	
óβòðõöμ    úûüýÝ´´	
-±=¼ §÷    °¨.132	

Table 1 • Supported Fonts (Continued)

<p>FONT OB                  !"#%&amp;'()*+,-                  ./0123456789:                  ;&lt;=&gt;?@ABCDEFGHI                  HIJKLMNOPQRST                  UVWXYZ€¥</p>	<p>Font S                  !"#%&amp;'()*+,-                  ./0123456789:                  ;&lt;=&gt;?@ABCDEFGHI                  HIJKLMNOPQRST                  UVWXYZ[\]^_`ab                  cdefghi jklmno                  pqrstuvwxyz                  {}~                  ÇüéääååçèèéíîïÀÁ                  ÉæÆøðöûÿÜÖØŁł×ƒ                  áíóúñÑæœó@™%&amp;i«»                  ÅÄÀ@ €¥                  äÅ                  ðÐÉÈÊ€íîï      ì                  óβδδδσµ      ůŰŷŸ`´                  -±=¾ §÷ °¨·132</p>
<p>Font U                  !"#%&amp;'()*+,-                  ./0123456789:                  ;&lt;=&gt;?@ABCDEFGHI                  HIJKLMNOPQRST                  UVWXYZ[\]^_`ab                  cdefghi jklmno                  pqrstuvwxyz                  {}~                  ÇüéääååçèèéíîïÀÁ                  ÉæÆøðöûÿÜÖØŁł×ƒ                  áíóúñÑæœó@™%&amp;i«»                  ÅÄÀ@ €¥                  äÅ                  ðÐÉÈÊ€íîï      ì                  óβδδδσµ      ůŰŷŸ`´                  -±=¾ §÷ °¨·132</p>	<p>Font WB                  !"#%&amp;'()*+,-                  ./0123456789:                  ;&lt;=&gt;?@ABCDEFGHI                  HIJKLMNOPQRST                  UVWXYZ[\]^_`ab                  cdefghi jklmno                  pqrstuvwxyz                  {}~                  ÇüéääååçèèéíîïÀÁ                  ÉæÆøðöûÿÜÖØŁł×ƒ                  áíóúñÑæœó@™%&amp;i«»                  ÅÄÀ@                  €¥                  äÅ                  ðÐÉÈÊ€íîï                  ì óβδδδσµ                  ůŰŷŸ`´-±=¾                  §÷ °¨·132</p>

Table 1 • Supported Fonts (Continued)

<p>Font WL ! " # \$ % &amp; ' ( ) * + , - ./ 0 1 2 3 4 5 6 7 8 9 : ; &lt; = &gt; ? @ A B C D E F G H I J K L M N O P Q R S T U V W X Y Z [ \ ] ^ _ ` a b c d e f g h i j k l m n o p q r s t u v w x y z {   } ~ Ç ü é â ä å ä ç è é è ì ï Ì Å Å É æ Æ ö ö ö ü ü ÿ Ö Ü ø £ Ø × f á í ó ú ñ Ñ ã ò ð ¼ ½ ¾ i « » Å Å Å © ø ¥ ã Ä ð Ð È È È € Í Î Ï</p>	<p>Font XB ! " # \$ % &amp; ' ( ) * + , - ./ 0 1 2 3 4 5 6 7 8 9 : ; &lt; = &gt; ? @ A B C D E F G H I J K L M N O P Q R S T U V W X Y Z [ \ ] ^ _ ` a b c d e f g h i j k l m n o p q r s t u v w x y z {   } ~ Ç ü é â ä å ä ç è é è ì ï Ì Å Å É æ Æ ö ö ö ü ü ÿ Ö Ü ø £ Ø × f á í ó ú ñ Ñ ã ò ð ¼ ½ ¾ i « » ø Å Å Å © ø ¥ ã Ä ð Ð È È È € Í Î Ï Ï Ì Ó ß Ö ö Ö µ þ þ Ü Ü Ü Ý Ý ~ - ± = ¾ ¶ § ÷ ~ ~ ~ ..132</p>
<p>Font XL ! " # \$ % &amp; ' ( ) * + , - ./ 0 1 2 3 4 5 6 7 8 9 : ; &lt; = &gt; ? @ A B C D E F G H I J K L M N O P Q R S T U V W X Y Z [ \ ] ^ _ ` a b c d e f g h i j k l m n o p q r s t u v w x y z {   } ~ Ç ü é â ä å ä ç è é è ì ï Ì Å Å É æ Æ ö ö ö ü ü ÿ Ö Ü ø £ Ø × f á í ó ú ñ Ñ ã ò ð ¼ ½ ¾ i « » ø Å Å Å © ø ¥ ã Ä ð Ð È È È € Í Î Ï Ï Ì Ó ß Ö ö Ö µ þ þ Ü Ü Ü Ý Ý ~ - ± = ¾ ¶ § ÷ ~ ~ ~ ..132</p>	<p>Font XM ! " # \$ % &amp; ' ( ) * + , - ./ 0 1 2 3 4 5 6 7 8 9 : ; &lt; = &gt; ? @ A B C D E F G H I J K L M N O P Q R S T U V W X Y Z [ \ ] ^ _ ` a b c d e f g h i j k l m n o p q r s t u v w x y z {   } ~ Ç ü é â ä å ä ç è é è ì ï Ì Å Å É æ Æ ö ö ö ü ü ÿ Ö Ü ø £ Ø × f á í ó ú ñ Ñ ã ò ð ¼ ½ ¾ i « » ø Å Å Å © ø ¥ ã Ä ð Ð È È È € Í Î Ï Ï Ì Ó ß Ö ö Ö µ þ þ Ü Ü Ü Ý Ý ~ - ± = ¾ ¶ § ÷ ~ ~ ~ ..132</p>

Table 1 • Supported Fonts (Continued)

Font XS	Font XU
!'#\$%&'()*+,-	!'#\$%&'()*+,-
./0123456789:	./0123456789:
;<=>?@ABCDEFG	;<=>?@ABCDEFG
HIJKLMNQPQRST	HIJKLMNQPQRST
UVWXYZ[\]^_`ab	UVWXYZ[\]^_`ab
cdefghijklmno	cdefghijklmno
pqrstuvwxyz	pqrstuvwxyz
{ } ~	{ } ~
ÇüéáàâäçèëèìíîË	ÇÜÉÁÀÂÄÇÈËÈÌÍÎË
ÆœÀðòóùÿÜÖøŁØ×f	ÆœÀðòóùÿÜÖøŁØ×f
áíóúñÑæœ¿®~½¼i«»	áíóúñÑæœ¿®~½¼i«»
ø ÅÄÅ© ø¥	ÅÄÅ© ø¥
äÅ	äÅ
ðÐÈÈ€ÏÏ Ì	ðÐÈÈ€ÏÏ Ì
óßòóòøµþüÜÿÿ	óßòóòøµ þüÜÿÿ
-±=¾¼¹§÷-ø...132	-±=¾¼¹§÷ ø*132

# ZDownloader Utility

This section provides you with the instructions for downloading and installing the ZDownloader Utility.

## Contents

Downloading the ZDownloader Utility .....	46
Installing the ZDownloader Utility .....	47

## Downloading the ZDownloader Utility

To download the ZDownloader Utility, perform the following from your computer:

1. Open a web browser and navigate to <http://www.zebra.com>.
2. Click on the **Support & Downloads** header on the web page.
3. Select a printer.
4. When the printer page opens, locate and select the **Software Utilities** tab.
5. Scroll down to the ZDownloader Utility and select the **Download** link



You will be prompted to create a user profile or login to <http://www.zebra.com> with an existing profile to download the ZDownloader Utility.

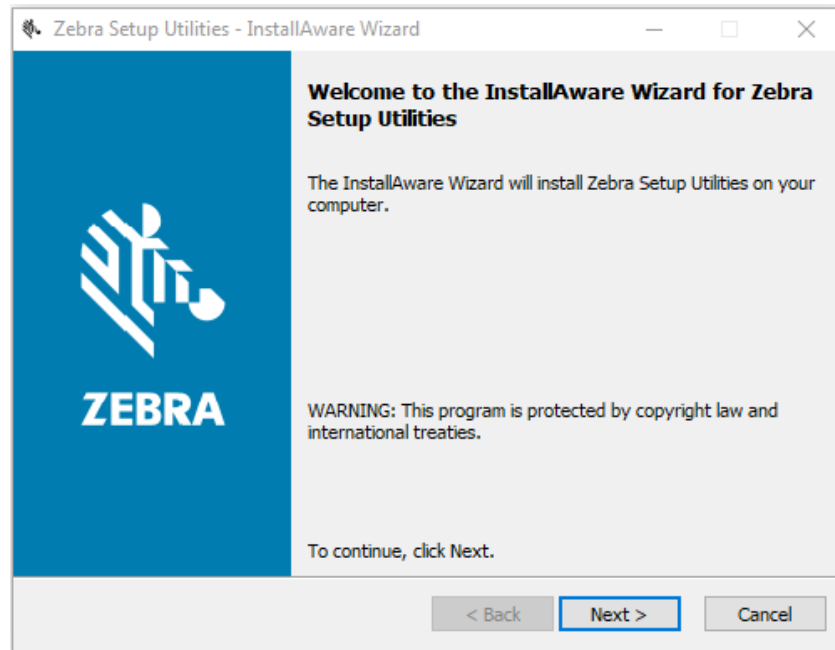
6. Click on the **Accept and Begin Download Now** button.  
The installation file download will begin.

## Installing the ZDownloader Utility

To install the ZDownloader Utility, perform the following from your computer:

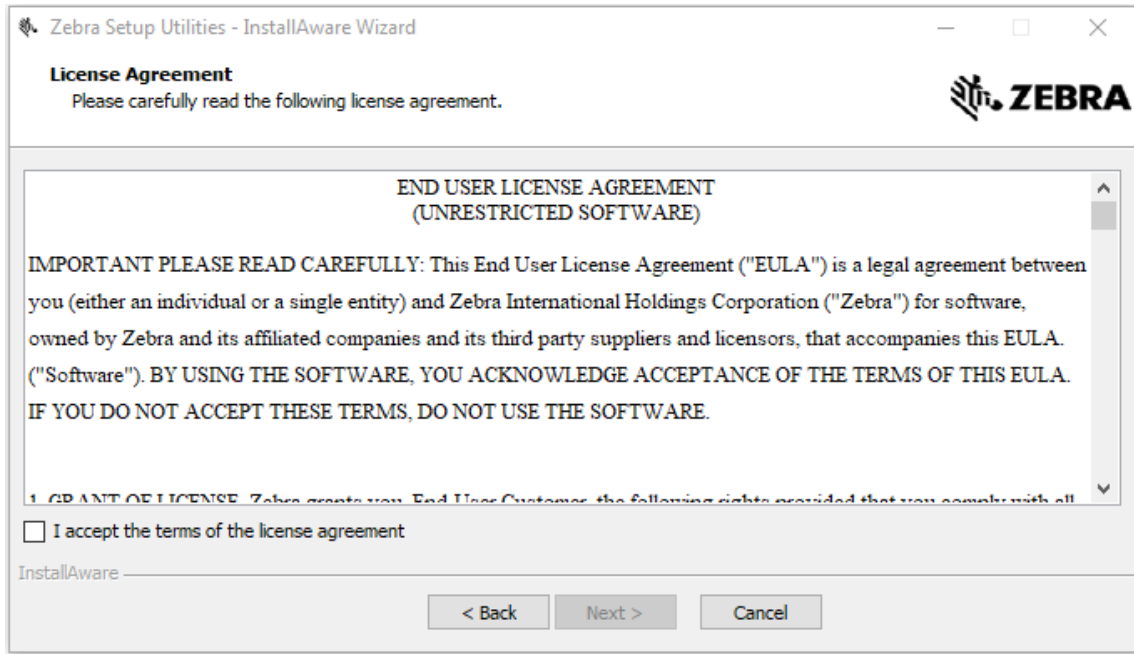
1. Run the installation file after the download is complete.
2. If you are prompted to allow the application to make changes to your computer, click **Yes**.

The utility installs on your computer. When installation is complete, the Firmware Downloader and ZBI Key Manager installation wizard appears.



3. Click **Next**.  
The End User License Agreement appears.

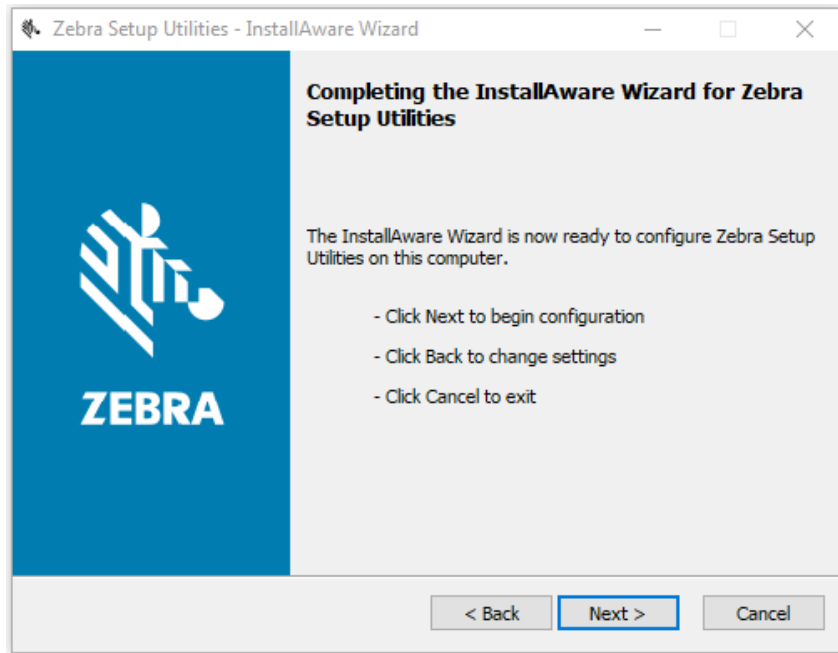
4. Read the terms of the agreement.



5. Click the **checkbox** to accept the terms.

6. Click **Next**.

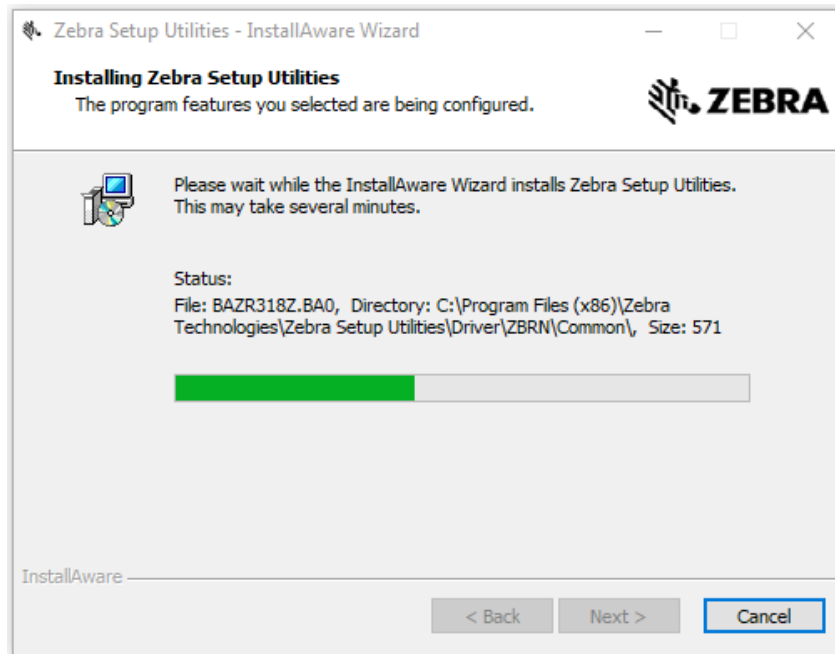
The installation wizard displays information about the installation.



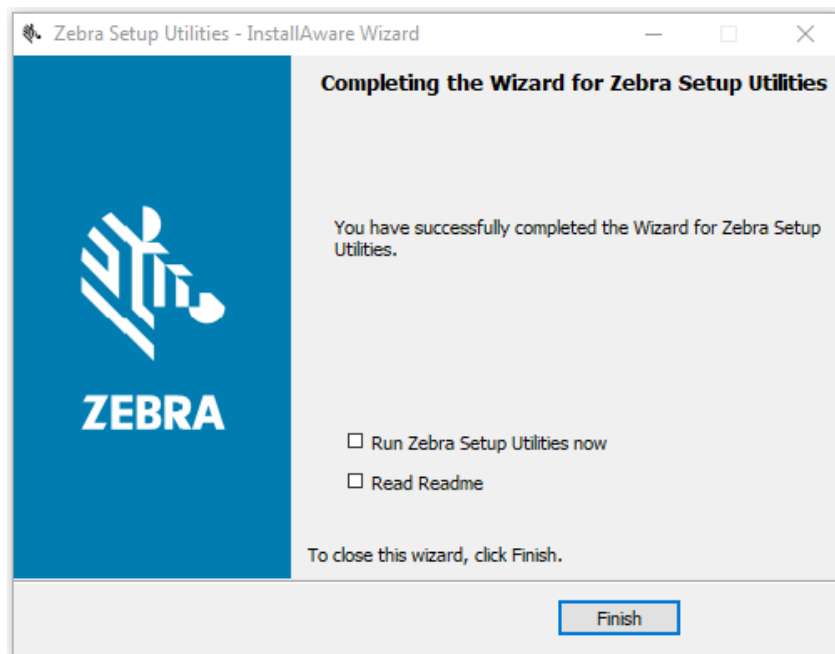


7. Click **Next**.

The installation wizard installs the application.



8. Click **Finish** to close the wizard.



# Index

## A

- application installation
  - acquiring the app, 9
  - canceling a download in progress, 20
  - downloading the app to printers, 18
- auto-detect printers, 11

## C

- commands and command parameters, 34
- connectivity options, 6

## D

- disabling the Virtual Device
  - by `apl.enable SGD` command, 39
  - through the control panel
    - QLn320 and QLn220 printers, 26
    - QLn420 printers, 23
    - Supported ZDxxx, ZQxxx, and ZTxxx and Printers with a Display, 29
- ways to enable/disable, 22

## E

- enabling the Virtual Device
  - by `apl.enable SGD` command, 39
  - through the control panel
    - QLn320 and QLn220 printers, 26
    - QLn420 printers, 23
    - Supported ZDxxx, ZQxxx, and ZTxxx and Printers with a Display, 29
- ways to enable/disable, 22

## F

- features, 5
- fonts, 41

## I

- IP Ethernet printers
  - auto-detect, 11
  - manually add, 12

## L

- liability, 2

## M

- manually add printers, 12
- modifying printer communication settings through ZDownloader, 16

## P

- parallel printers, 12
- print servers, 6

## S

- serial interface
  - add printers, 12
- Set/Get/Do (SGD) commands, 39
- supported fonts, 41

## U

- USB printers, 11

**V**

- version
  - level of support for Virtual Devices, 40
  - of Virtual Device, 39
- Virtual Device version, 39

**W**

- wired print server
  - auto detect, 11
  - for more information, 6
  - manually add, 12
- wireless print server
  - auto detect, 11
  - for more information, 6
  - manually add, 12

**Z**

- ZDownloader
  - adding printers, 10
  - canceling a download in progress, 20
  - deleting printers, 17
  - downloading the Virtual Device app to printers,  
18
  - downloading ZDownloader, 46
  - installing ZDownloader, 47
  - modifying printer settings, 16
- zebra printer setup utility for android devices, 10



**Corporate Headquarters**

Zebra Technologies Corporation  
3 Overlook Point  
Lincolnshire, IL 60069 USA  
T: +1 847 634 6700  
Toll-free +1 866 230 9494  
F: +1 847 913 8766

<http://www.zebra.com>